

# Lavender

Fourth Floor Flat in La Maison Des Fleurs,  
a 17th Century building overlooking a quiet cobbled  
square, and only two minutes walk from the harbour

Sleeps 2 (1 Double Bedroom – which can be arranged as a twin)

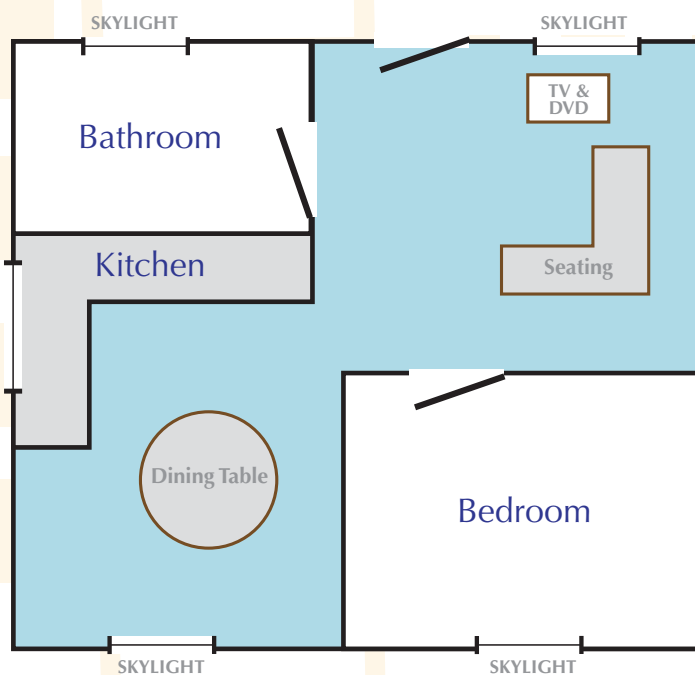
Lavender is a loft style, modern and spacious studio apartment. Although Lavender is quite a climb up the winding stairs the 360 degree views of Honfleur, which stretch as far as the famous Pont De Normandie, make the climb well worth the effort!

The separate bedroom with it's sloping ceiling and skylight has two large single beds which can be made up as a double.

The open plan L-shaped living/dining and kitchen space consists of a fully fitted kitchen with integrated appliances including dishwasher. The living area has an integrated TV/DVD player that also plays audio CDs.

The large bathroom with bath and over bath shower has fantastic views over the grey-slatted rooftops of Honfleur and the surrounding area.

## FLOORPLAN



■ COMMUNAL SPACE

*PLEASE NOTE: Honfleur is characterized by it's beautiful 17th Century tall and narrow staircases. Lavender is located on the fourth floor and may not be suitable for those of restricted mobility.*

## ACCOMODATION DETAILS

**Luxuries:** DVD Player, Fluffy Bathrobes, Welcome basket of local produce

**General:** Central Heating, TV

**Standard:** Kettle, Toaster, Iron, Hair Dryer

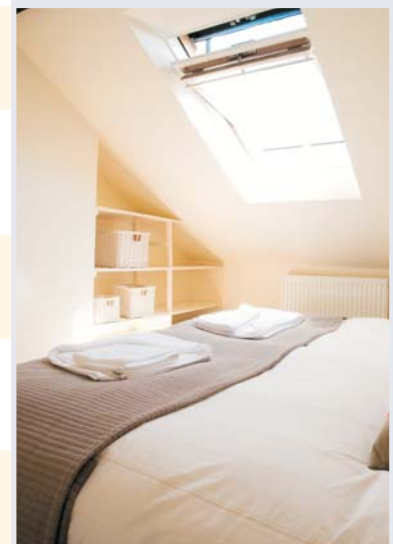
**Utilities:** Cooker, Microwave, Fridge

**Rooms:** Bedrooms (1), Bathrooms (1)  
Shower Rooms (1), WCs (1)

**Furniture:** Double Beds (1)  
Dining Seating for 4  
Lounge Seating for 3

**Sleeps:** Maximum 2 people

**Other:** Linen and Towels Provided



**MUNRO HOLIDAYS**

*Honfleur on your doorstep*

# Lavender (continued)

## DIRECTIONS AND PHOTO GALLERY

There are many options for getting to Honfleur. We have years of experience of planning trips to Honfleur so if you would like assistance with booking the best form of transport for you please let us know and we will do our best to help.

### Car-Ferry

The most popular way of traveling to Honfleur is by ferry and road. Having your own transport whilst staying in Honfleur will enable you to visit as much of the Calvados region as you wish - and there is a lot to see!

TRAVEL VIA:	Drive time	Crossing time
Boulogne (from Dover)	2.5 hours	55 minutes+
Calais (from Dover)	3 hours	40-100 minutes
Dieppe (from Newhaven)	1 hour	3 hours 15 minutes
Le Havre	30 minutes	5 hours
Caen	1 hour	3-5 hours

### Euro Tunnel

The Dover/Calais journey takes just 35 minutes by Eurotunnel with a 3 hour drive to Honfleur.

### By Air

Saint-Gatien Airport (15 miles) 20 minutes from Honfleur.

Caen airport (47 miles) 1 hour from Honfleur.

Le Havre airport (15 miles) 20 minutes from Honfleur.

Address:

**La Maison Des Fleur,  
Place de Pierre Berthelot, Honfleur, France**



**MUNRO HOLIDAYS**

*Honfleur on your doorstep*